



CASAS Recertification Training

Marty Olsen – martha.olsen@gmail.com

PowerPoint and Links can be found at

<https://www.mnabeassessment.com/presentations>

(select links under CASAS Recertification – April 2025)

Objectives



Review updated information regarding CASAS Assessments



Overview of currently approved CASAS assessments – STEPS Reading and Listening, Reading GOALS, and Math GOALS 2



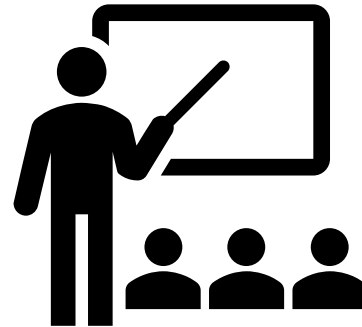
Review CASAS tools to assist in targeting instruction



Meet the ABE “every five years” test administration recertification requirement

Who Is Eligible to Administer Assessments?

- Staff who have gone through a CASAS Implementation Training with a certified trainer, or
- Staff who have completed the appropriate online modules created by CASAS and found on <http://training.casas.org>, and
- Staff who have completed their “every five years” recertification training



Not sure which training you need? [CLICK HERE](#)

ADMINISTRATORS, COORDINATORS, DATA MANAGERS

Module 1: Exploring CASAS**

Introduction to TOPSpro Enterprise

eTESTING?

CASAS eTests Agency Agreement**

Module 2: Exploring CASAS eTests**

CASAS eTests Coordinator Certification*

PAPER TESTING?

Module 3: Launching Paper Tests with Proctor Certification*

CITIZENSHIP

CASAS Citizenship Interview Test Certification*

CASAS Citizenship Interview Test Recertification*

Citizenship Program Resources

PROCTORS

eTESTING?

CASAS eTests Proctor Certification*

PAPER TESTING?

Module 3: Launching Paper Tests with Proctor Certification*

REMOTE TESTING?

Agency Remote Testing Agreement (Non-CA)*

CA Agency Remote Testing Agreement*

Proctor Remote Testing Agreement*

Proctor Remote Testing Certification

Remote Testing Resources (Non-CA)

CA Remote Testing Resources

EDUCATORS

Module 4a: Interpreting Test Results

Module 4b: Instructional Reports

WORKFORCE PARTNERS

Module 5: Exploring CASAS Appraisals

BUSINESS AND INDUSTRY

CASAS eWORKS Implementation

IN-PERSON TRAINING PORTAL

Training Completion Portal (by State)

Training Completion Portal Request

[CLICK HERE](#) to navigate the CASAS STEPS and GOALS 2 test series

* REQUIRED

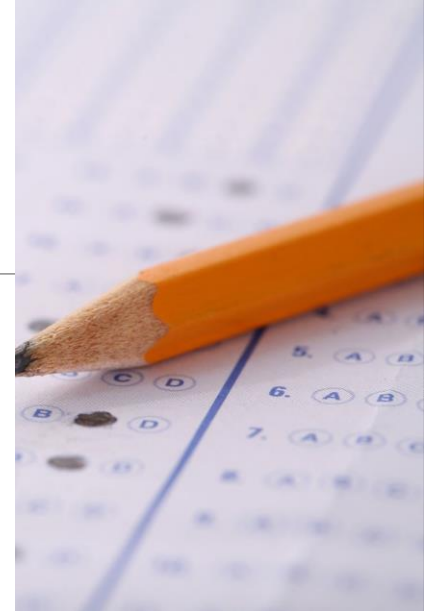
** REQUIRED BY AT LEAST ONE STAFF MEMBER PER NEW AGENCY (refer to [CASAS Training by Role](#))

Why Do We Administer Assessments?

- Obtain basic information about each student's basic functioning life skills
- Establish the best class placements for the student
- Provide guidance for teacher as to each student's instructional needs
- Establish a baseline for post-testing students
- Post-tests provide teacher with valuable information regarding instructional effectiveness
- Accountability



CASAS Is a Standardized Test



- Every student should have the same experience every time
- Follow steps for test day and use proper timing
- Read script verbatim
- Assist students with demographics only
- Do not review test questions before testing session – only practice items
- Students may not use cell phones, translators or dictionaries
- Do not allow breaks in the middle of testing session
- Do not review correct test answers with examinees

Proctor Certification: <http://training.casas.org>

***Launching Paper Tests and Proctor Certification**

***CASAS eTests Proctor Certification**



- ☐ Maintaining test security & student confidentiality at all times.
- ☐ Ensuring appropriate physical conditions & accommodations for testing.
- ☐ Making sure CASAS test booklets are managed appropriately.
- ☐ Following appropriate test administration procedures.
- ☐ Monitoring students & assisting with emergencies during testing.
- ☐ Understanding the policy on cheating.

Testing Guidelines Overview

Each site offering CASAS testing should have a **Test Administration Manuals (TAM) kept in a secure location and made available for testing staff.

Each Test Administration Manual (TAM) contains:


- | | |
|--|--|
| ➡ Answer keys | Standardized test administration procedures and policies |
| ➡ Scoring guidelines (Appraisal and Pre/Posttests) | Test security policy and procedures |
| ➡ Score conversion charts | Educational Functioning Level |
| ➡ Next assigned test charts | Descriptors |
-



NRS-approved Assessments for English Language Learners

- Which assessments are approved?
- What do we know about the assessments?
- Do we need new training to administer these tests?

NRS Approved CASAS Assessments for English Language Learners

ESL Assessments		
	Reading	Listening
	<p>New! Reading STEPS</p> <p>Approved through July 13, 2030!</p>	<p>New! Listening STEPS</p> <p>Approved through July 13, 2030!</p>

*Note: Life & Work can no longer be used for NRS reporting. All copies of this test should be destroyed/shredded.

STEPS Reading and Listening Series



Reading STEPS for ESL

<https://www.casas.org/product-overviews/assessments/reading-steps>

Listening STEPS for ESL

<https://www.casas.org/product-overviews/assessments/listening-steps>

- **STEPS** – Student Test of English Progress and Success
- Both Reading and Listening series have 5 levels, 2 forms per level
- Aligned to the ELP standards (English Language Proficiency standards)
- Increased focus on content standards together with competencies
- Multiple choice - similar item types as found in Reading GOALS
- The process of administering these tests remains the same.



Who Should be Given a CASAS **STEPS** Reading or Listening?

- Only appropriate for learners for whom English is not their first language
- Only appropriate for ELLs who score **under 241 (Reading) or under 232 (Listening) on STEPS**
- Once an English language learner scores **241+ (Reading) or 232+ (Listening) on STEPS post-test**, SiD will give them a level completion – they will be marked “Completed ESL”
- Those learners must be given a new Reading test, using either CASAS GOALS or TABE 13&14 as soon as possible. It will be impossible to record more than 12 additional hours without a new EFL (Educational Functioning Level).



Life & Work vs. STEPS



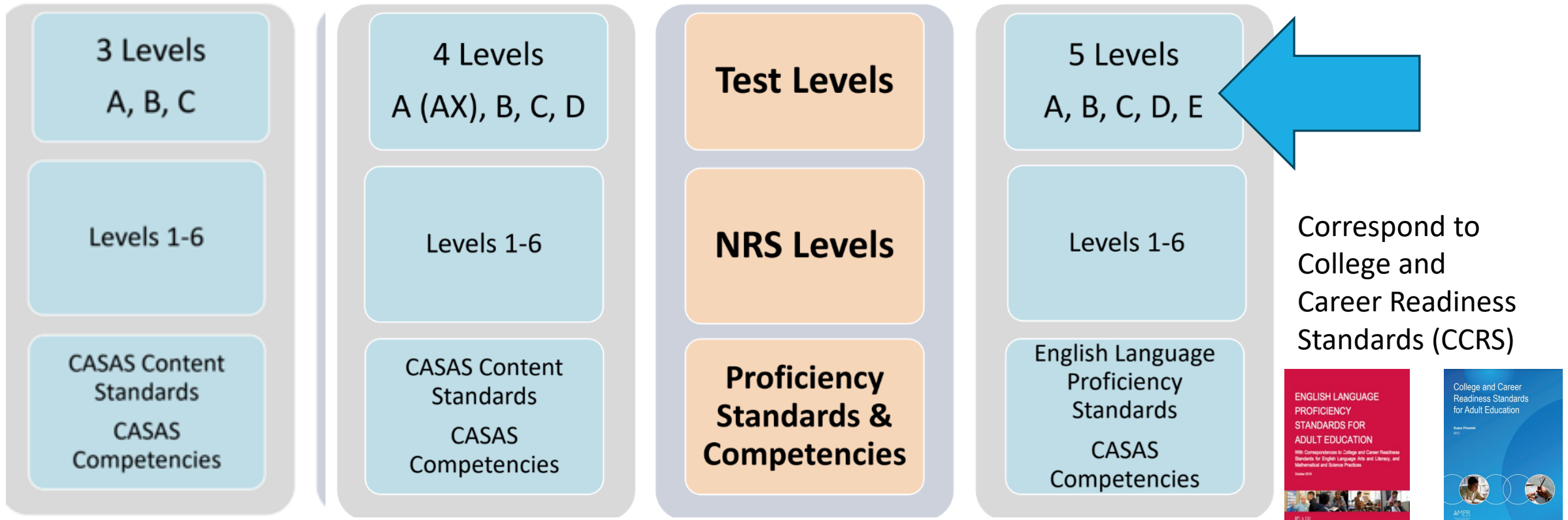
Life and Work

Life and Work **Listening**



Life and Work

Life and Work **Reading**



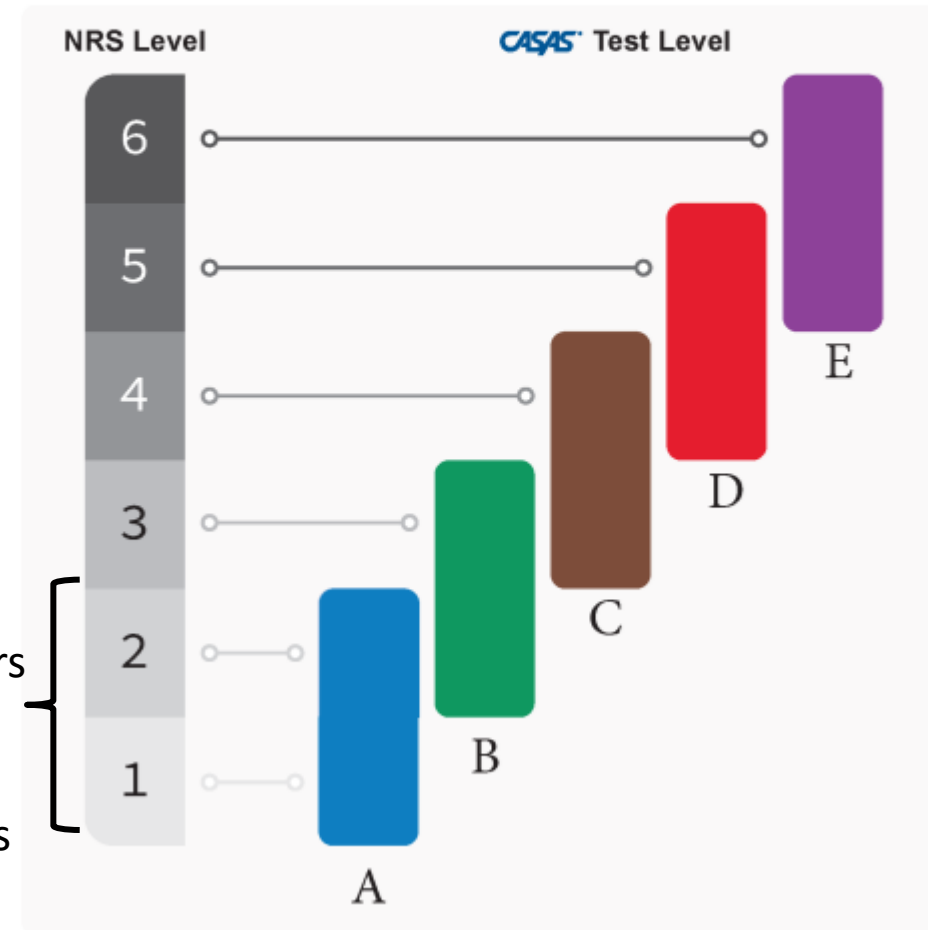
*citation: image taken from CASAS SI-2023

Reading STEPS

NRS Level Breakdown

NRS ESL Levels	ESL Level Names	Reading STEPS Scale Score Ranges	Grade Level
1	Beginning ESL Literacy	183 and below	K
2	Low Beginning ESL	184 – 189	K
		190 – 196	1
3	High Beginning ESL	197 – 206	1
4	Low Intermediate ESL	207 – 211	2
		212 – 216	3
5	High Intermediate ESL	217 – 222	4
		223 – 227	5
6	Advanced ESL	228 – 230	6
		231 – 234	7
		235 – 238	8
	Exit Advanced ESL	239 and above	9+

Test Level Breakdown



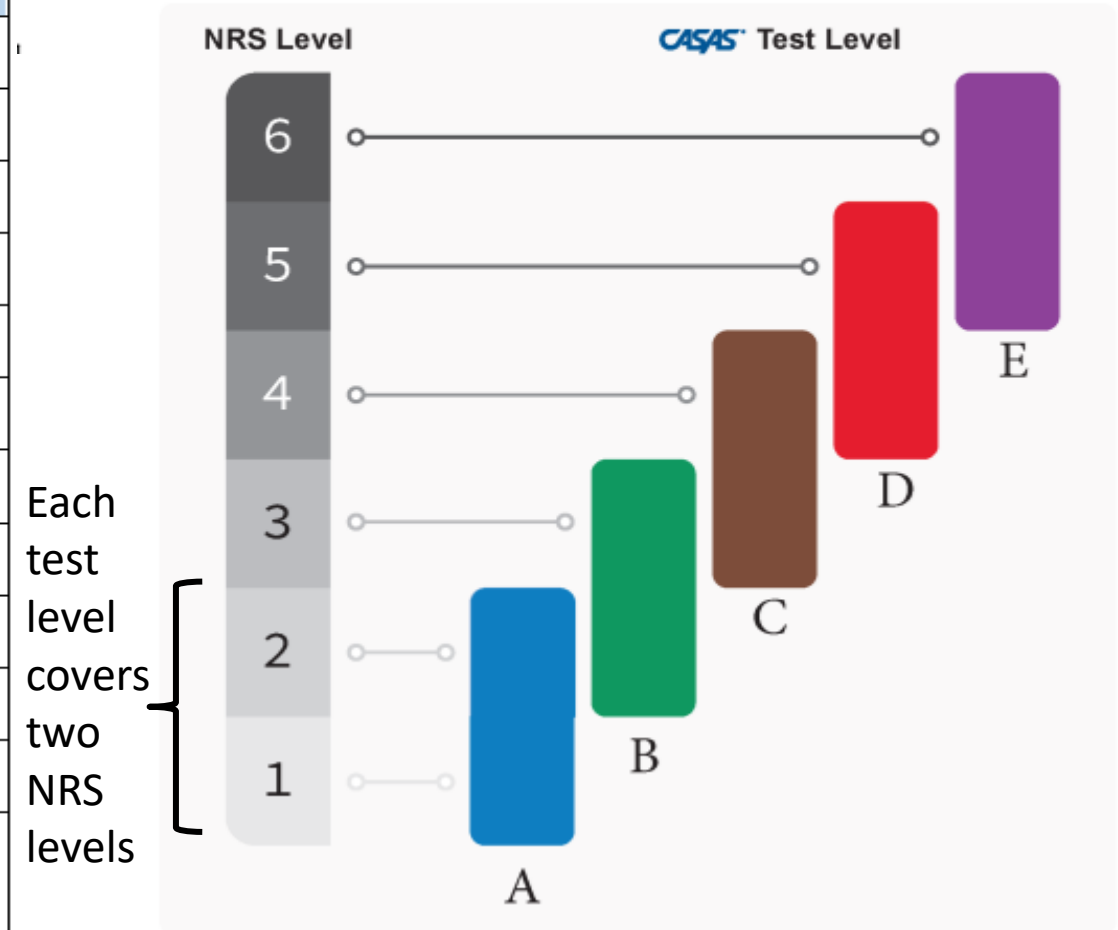
Each test level covers two NRS levels

Listening STEPS

NRS Level Breakdown

NRS ESL Levels	ESL Level Names	Listening STEPS Scale Score Ranges	Grade Level
1	Beginning ESL Literacy	181 and below	K
2	Low Beginning ESL	182 – 186	K
		187 – 191	1
3	High Beginning ESL	192 – 201	1
4	Low Intermediate ESL	202 – 206	2
		207 – 211	3
5	High Intermediate ESL	212 – 216	4
		217 – 221	5
6	Advanced ESL	222 – 224	6
		225 – 227	7
		228 – 231	8
	Exit Advanced ESL	232 and above	9+

Test Level Breakdown







NRS-approved Assessments for ABE/ASE

- Which assessments are new?
- What do we know about the new assessments?
- Do we need new training to administer these tests?

Approved NRS Test Status for ABE Learners

ABE / ASE Assessments		
	Reading	Math
	<p>Reading GOALS</p> <p>Approved through June 30, 2025</p>	<p>CASAS Math GOALS is no longer approved for NRS reporting. Destroy/shred all copies!</p>
	<p><i>(Submitted for approval)</i></p>	<p>New! Math GOALS 2</p> <p>Approved through July 13, 2030!</p>



CASAS GOALS Assessments for ABE

CASAS Reading GOALS – CASAS Math GOALS 2

- Greater Opportunities for Addult Learning Success
- Reading test is designed for learners for whom English is their first language, OR English language learners who have earned a 241 or higher on STEPS
- ELLs can be given the math test if math skills are going to be addressed. The learner could have an ESL Reading EFL* and an ABE Math EFL*.
- Both Reading and Math series are aligned with the College and Career Readiness Standards

* **EFL – Educational Functioning Level**

Math GOALS 2 series



Math GOALS 2 for ABE/ASE

<https://www.casas.org/product-overviews/assessments/math-goals-2>

- 5 levels in the series (A to E), 2 forms per level
- Aligned to the College and Career Readiness (CCR) standards
- Similar content and item types as in Math GOALS, expanded, enhanced
- CASAS GOALS 2 is the only CASAS math test approved for NRS reporting. If ELL curriculum will include a math focus, this test can be used for your learners. Learners will have an ABE Educational Functioning Level (EFL).
- Administration protocol remains the same as Math GOALS



Math

2 Levels
AB and CD

Levels 1-6

CCR Standards
and CASAS
Competencies

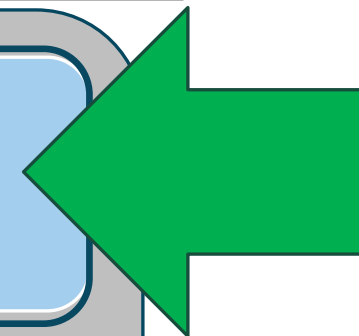


Math

5 Levels
A, B, C, D, E

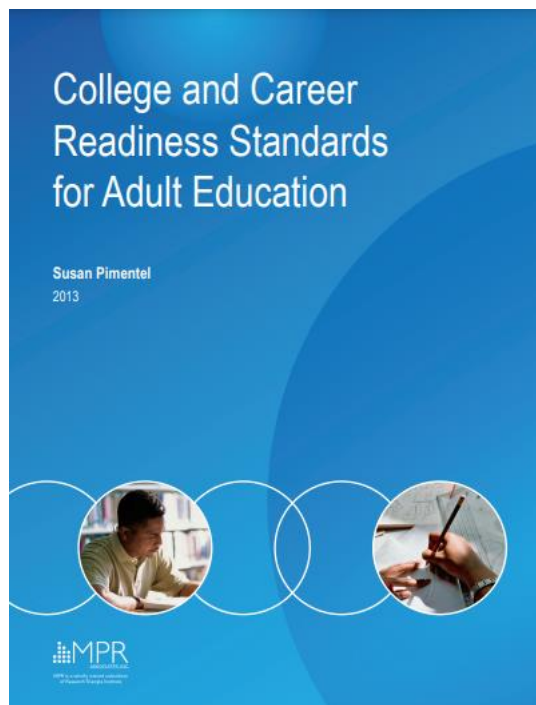
Levels 1-6

CCR Standards
and CASAS
Competencies





CASAS GOALS Math 2



Content Area and CCRS Content Descriptions
Number Sense and Operations Number and Operations: Base Ten Number and Operations: Fractions Number System Ratios and Proportional Relationships Number and Quantity: The Real Number System
Algebraic Thinking Operations and Algebraic Thinking Expressions and Equations Functions Algebra: Arithmetic and Polynomials and Rational Expressions Algebra: Reasoning with Equations and Inequalities Algebra: Creating Equations Functions: Interpreting Functions Functions: Linear, Quadratic, and Exponential Models
Geometry and Measurement Geometry Measurement and Data Geometry: Congruence Geometry: Similarity, Right Triangles, and Trigonometry Geometry: Geometric Measurement and Dimension Geometry: Modeling with Geometry
Data Analysis, Statistics, and Probability Measurement and Data Statistics and Probability Statistics and Probability: Interpreting Categorical and Quantitative Data

Math GOALS 2

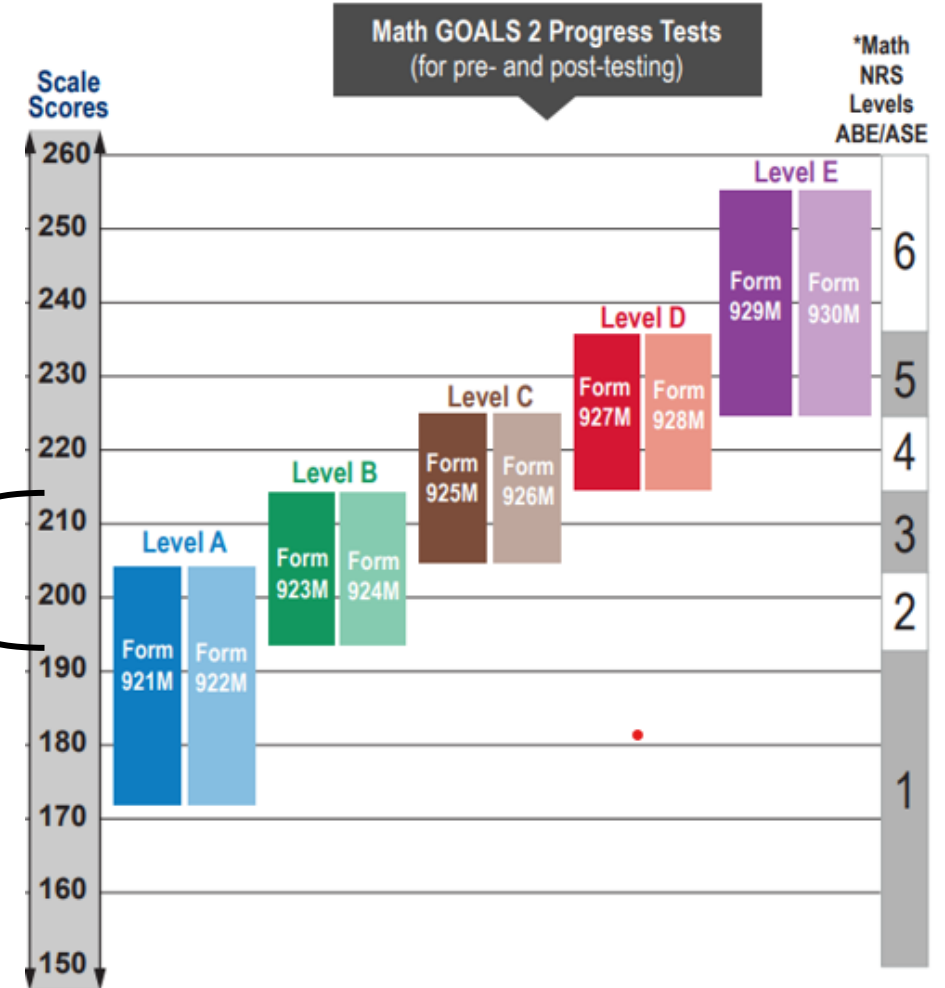


NRS Level Breakdown

NRS ABE/ASE Levels	ABE/ASE Level Names	Math GOALS 2 Scale Score Ranges	Grade Level
1	Beginning ABE Literacy	183 and below	K
		184 – 192	1
2	Beginning Basic Education	193 – 198	2
		199 – 203	3
3	Low Intermediate Education	204 – 208	4
		209 – 213	5
4	Middle Intermediate Education	214 – 220	6
		221 – 224	7
5	High Intermediate Education	225 – 228	7
		229 – 235	8
6	Adult Secondary Education	236 – 240	9
		241 – 244	10
		245 – 248	11
		249 and above	12

Test Level Breakdown

Each test level covers two NRS levels



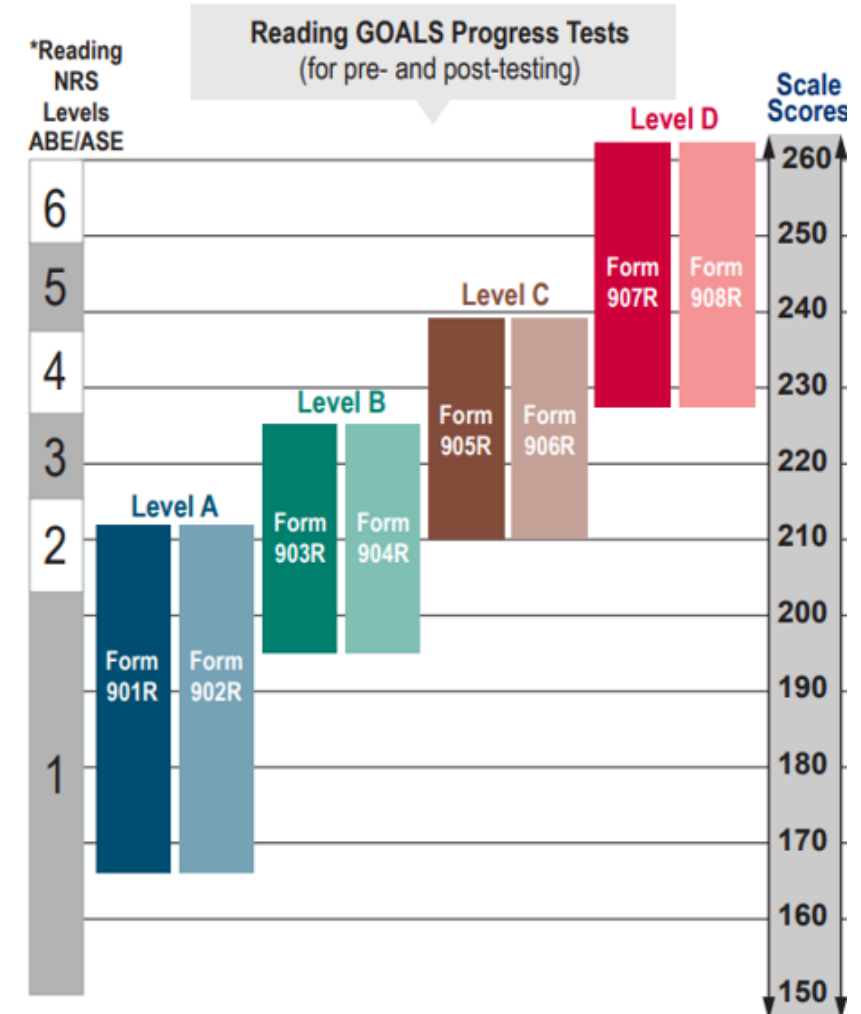
Reading GOALS

NRS Level Breakdown

NRS ABE/ASE Levels	ABE/ASE Level Names	Reading GOALS Scale Score Ranges	Grade Level
1	Beginning ABE Literacy	193 and below	K
		194 – 203	1
2	Beginning Basic Education	204 – 210	2
		211 – 216	3
3	Low Intermediate Basic Education	217 – 222	4
		223 – 227	5
4	High Intermediate Basic Education	228 – 230	6
		231 – 234	7
		235 – 238	8
5	Low Adult Secondary Education	239 – 243	9
		244 – 248	10
6	High Adult Secondary Education	249 – 253	11
		254 and above	12



Test Level Breakdown





SAME PROCEDURES FOR
ADMINISTERING TESTS



SAME TEST SECURITY
GUIDELINES

Test Administration and Security



PRECONFIGURED
TESTING SESSIONS



NEW BOOKLETS FOR
PAPER TESTERS



The Tests

FAQs

- How do I prepare my students for these tests?
- What can I use for my pre-lit learners?
- Test scores
- How will the STEPS test assess academic vocabulary?
- Is algebra tested at all levels?
- Will I see geometry throughout the levels?

Sample Test Items

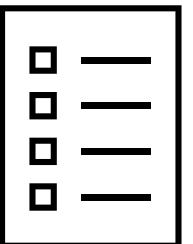
Reading GOALS
Math GOALS 2
STEPS Reading
STEPS Listening

Sample Test Items:

- ❖ Not actual tests
- ❖ Not predictors of student performance
- ❖ Not valid for level placement, assessment, or for reporting standardized scores

Use Sample Test Items to:

- ❖ Familiarize and give students practice with CASAS items
- ❖ Make future testing go smoothly
- ❖ Help reduce student test-taking anxiety



Beginning Literacy Students

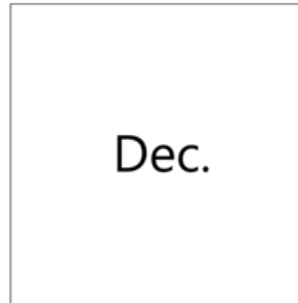
What test should I administer to my pre-lit learners since Beginning Lit 27/28 are no longer approved?

Beginning Literacy learners should be tested with STEPS Level A (Forms 621 and 622).

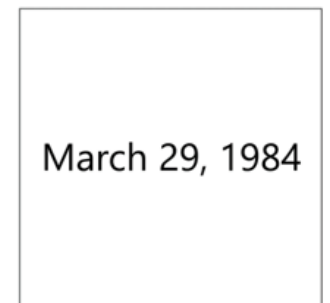
- 73% of the test questions on STEPS Level A are similar to Beginning Literacy content on Forms 27 and 28.
- More than 50% of the content focuses on high frequency vocabulary (43% using photos and 15% text).



- A. shirts
- B. shoes
- C. shorts
- D. socks



- A. October
- B. November
- C. December
- D. January



- A. 3-29-84
- B. 5-29-84
- C. 7-29-84
- D. 9-29-84

THE ISSUE!!



Level A Inaccurate Scores

Students with low levels of literacy

- Need to place students into NRS Level 1
- Need to assign scale score for reporting



- ~~Learners only need to get 4 correct answers to earn a scaled score.~~
- If a student gets only 1, 2, or 3 correct, they still receive the lowest scale score – no invalid scores in STEPS Level A (Reading or Listening!)

Question: How do we test Beginning Literacy students?

1. Follow the CASAS Intake Screening Process for STEPS, substituting our revised Intake Summary for page 12. The proctor should maintain a close presence with the tester.
2. Use the Reading Screening to determine learner's literacy skills (don't just rely on student self-assessment).
3. Use the CASAS Level A Inaccurate Scores: Change to Assign a Scale Score document to score the test (unless the learner has a raw score higher than 4, in which case the original scoring guide in the Test Administration Manual should be consulted.)
4. The score should be recorded in SiD, and in TOPSpro if eTests might be a posttest option.

Comprehensive Adult Student Assessment Systems CASAS[®]

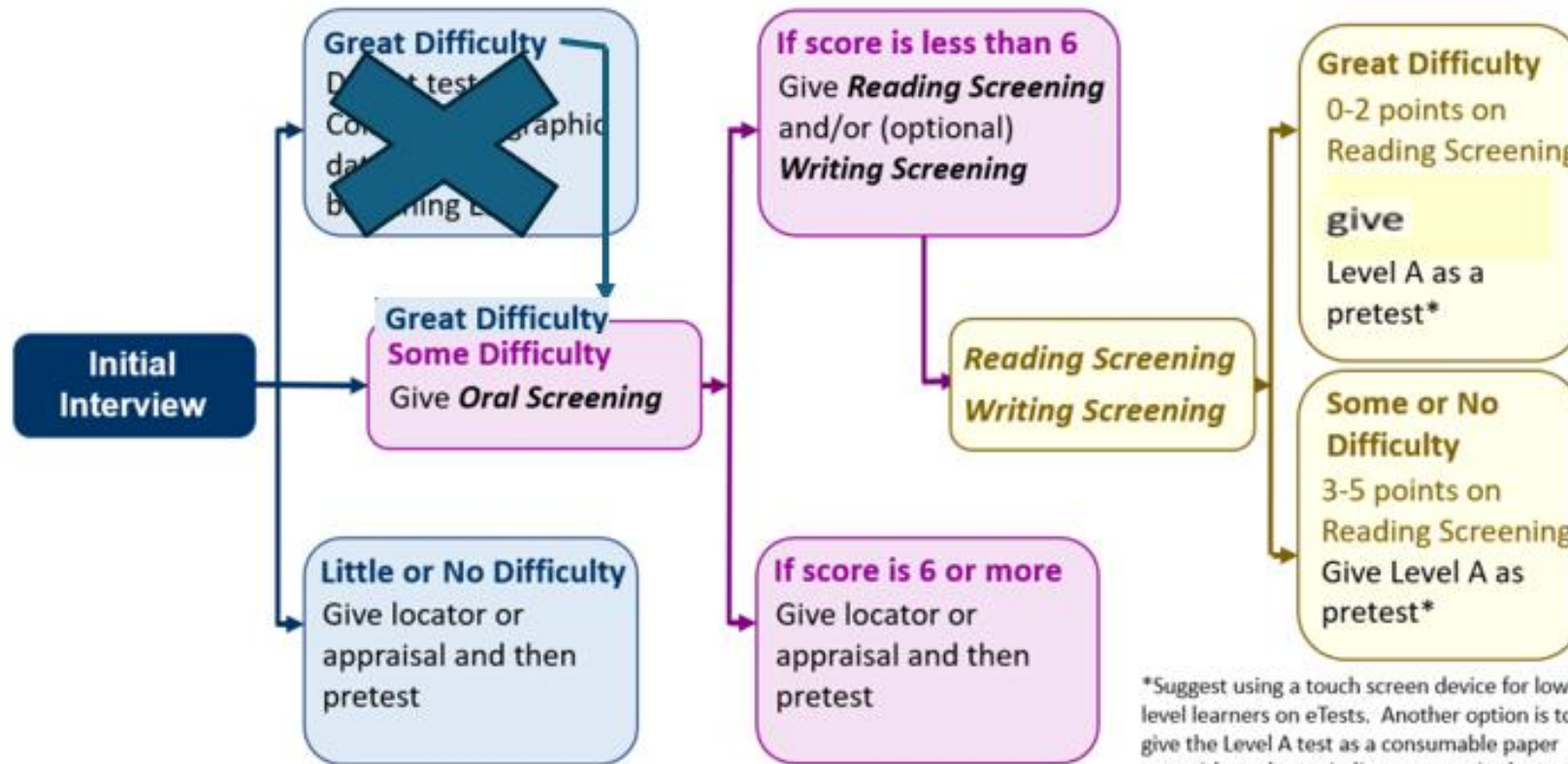
Contents	
CASAS Intake Screening Process for STEPS	0
Oral, Writing, and Reading Tools	0
CASAS Intake Screening Process Overview	2
Initial Interview	3
Oral Screening (ESL Only)	4
Description	4
Giving the Oral Screening	4
Scoring the Oral Screening	5
Oral Screening Results	5
Writing Screening (optional)	6
Description	6
Administration Instructions	6
Writing Screening Results	6
Reading Screening	7
Description	7
Administration Instructions	7
Reading Screening Results	8
CASAS eTests Sessions based on Intake Screening results	9
Intake: Pretest - Level A [®]	9
Intake: Pretest - with Locator	9
Intake Screening Summary	10
Interpretation of Results	10
Basic Skills Education Referral	11
Program Placement	11
APPENDICES	12
APPENDIX A - Intake Screening Scoring Sheet	13
APPENDIX B - Oral Screening	14
APPENDIX C - Writing Screening Student Response Sheet	16
APPENDIX D - Reading Screening	17

© 2021 CASAS — CASAS Intake Screening Process for STEPS

Question: How do we test Beginning Literacy students?

Intake Screening Summary

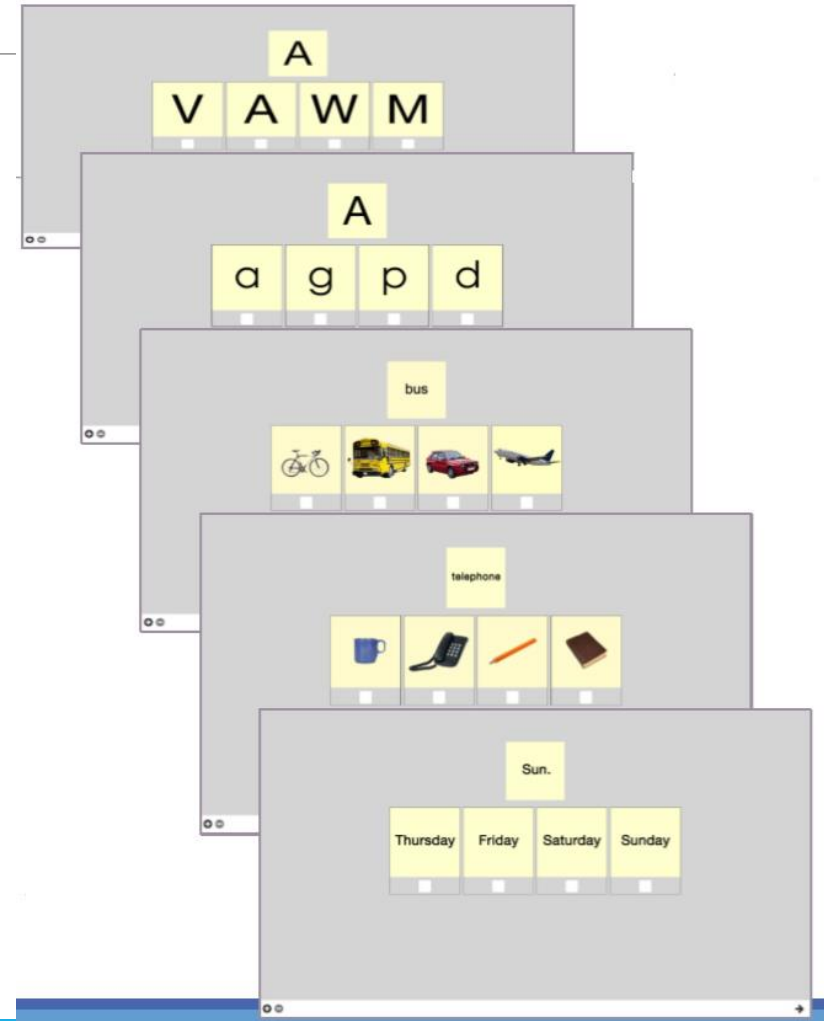
The flowchart below shows a summary of the CASAS intake screening process.



*Suggest using a touch screen device for low-level learners on eTests. Another option is to give the Level A test as a consumable paper test with students circling answers in the test booklet.

Beginning Literacy Screening

- Administer 5 reading questions from Intake Screening
- If some difficulty, after some instruction administer Level A (Form 621 or 622)
- If little or no difficulty, administer Level A (Form 621 or 622)



Reading STEPS Level A, Form 621

Inaccurate Score
(*)

Next Assigned Test: Level A, Form 621R

Student Raw Score	Student Scale Score	Next Assigned Test
2		
3		
4		
5		
6		
7		
8		
9		
10	172	
11	174	Level A Form 622R

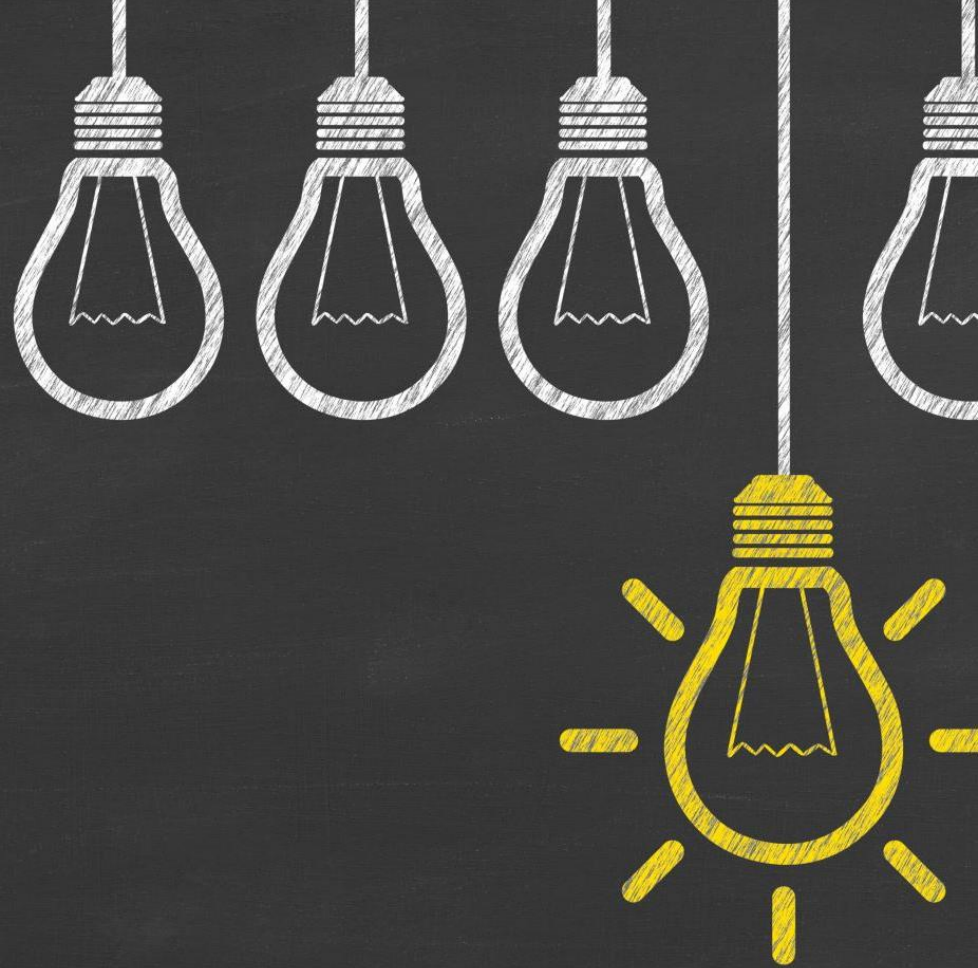
Notice came out Fall 2024. You will need to update your Test Administration Manual with this scoring information!

Updated Reading STEPS Level A, Form 621

Inaccurate Score
(*)

Next Assigned Tests – Level A, Form 621R

Student Raw Score	Student Scale Score	NRS Level	Next Assigned Test
0	160		
1	160		
2	160	1	Level A Form 622R
3	160		
4	160		
5	162		
6	165		
7	167		
8	169		
9	171		
10	172	1	Level A Form 622R
11	174		



CASAS Aids to Utilize Test Results

Go to <https://www.casas.org/product-overviews/assessments> to learn more about the assessment(s) you are using.

- Test forms, timing, and scale score ranges
- Grade level equivalents
- Test blueprints
- TOPSpro reports

Test Timing for STEPS Test Series



**Students must be allowed up to the time listed to complete the test, but most students will finish the test in less time.

Source: www.casas.org

Reading STEPS – Forms/Timing/Score Ranges

CASAS Level	Form Number	Number of Test Items	Test Time*	Scale score ranges**
Appraisal	619R	28	30 minutes	
Locator	620R	14	15 minutes	
A	Forms 621R - 622R	33	30 minutes 15	160 - 196
B	Forms 623R - 624R	36	50 minutes 30	184 - 206
C	Forms 625R - 626R	36	75 minutes 45	197 - 216
D	Forms 627R - 628R	36	75 minutes 51	207 - 227
E	Forms 629R - 630R	36	75 minutes 56	217 - 251

*Average Test Time in Red

Listening STEPS – Forms/Timing/Score Ranges

CASAS Level	Form Number	Number of Test Items	Test Time*	Scale score ranges**
Appraisal	619L	28	30 minutes	
Locator	620L	14	15 minutes	
A	Forms 621L - 622L	33	28 minutes 16	158 - 191
B	Forms 623L - 624L	36	45 minutes 29	182 - 201
C	Forms 625L - 626L	39	52 minutes 35	192 - 211
D	Forms 627L - 628L	39	56 minutes 40	202 - 221
E	Forms 629L - 630L	39	38 minutes 31	212 - 235

*Average Test Time in Red 36

Test Timing for Reading GOALS



and Math GOALS 2



Reading GOALS – Forms/Timing/Score Ranges

CASAS Level	Form Number	Number of Test Items	Test Time*	Scale score ranges
Locator	104 R	12	15 minutes	
Appraisal	900R	28	30 minutes	
A	Forms 901R – 902R	39	60 minutes	165 - 212
B	Forms 903R – 904R	40	75 minutes	196 - 225
C	Forms 905R – 906R	40	75 minutes	210 - 238
D	Forms 907R – 908R	40	75 minutes	228 - 262

Math GOALS 2 – Forms/Timing/Score Ranges

CASAS Level	Form Number	Number of Test Items	Test Time*	Scale score ranges**
Appraisal	919M	28	30 minutes	
Locator	920M	14	15 minutes	
A	Forms 921M - 922M	33	50 minutes	171 - 203
B	Forms 923M - 924M	36	65 minutes	193 - 213
C	Forms 925M - 926M	36	75 minutes	204 - 224
D	Forms 927M - 928M	36	75 minutes	214 - 235
E	Forms 929M - 930M	36	90 minutes	225 - 255

**Students must be allowed up to the time listed to complete the test, but most students will finish the test in less time.

Source: www.casas.org

Below Accurate Range (*)	Reading GOALS Level C Example		Below Accurate Range
	Raw Score	Scale Score	
<ul style="list-style-type: none"> These score points are <i>below the accurate range</i> of a test form and marked with an asterisk (*). These score points are <i>inaccurate</i> and <i>cannot be reported</i> for pre- or post-testing. Retesting is required to get an accurate range score. <ul style="list-style-type: none"> Retest on a lower-level form. 	1	*	
	2	*	
	3	*	
	4	*	
	5	*	
	6	*	
	7	*	
	8	*	
	9	*	
	10	*	
Accurate Range <ul style="list-style-type: none"> These score points are <i>within the accurate range</i> of a test form. These are <i>valid scores</i>. Scale scores <i>can be used</i> – <ul style="list-style-type: none"> For Pretest results to set the baseline score for measuring growth at time of next test. For Post-test results to document learning gains. Results are <i>reportable</i> for pre- and post-test scores. Retesting is not required. 	11	210	Accurate Range
	12	211	
	13	213	
	14	214	
	15	215	
	16	216	
	17	217	
	18	219	
	19	220	
	20	221	
	21	222	
	22	223	
	23	224	
	24	225	
	25	227	
	26	228	
	27	229	
	28	230	
	29	232	
	30	233	
	31	235	
	32	236	
	33	237	
	33	237	
Conservative Estimate Range (♦) <ul style="list-style-type: none"> Diamond scores (♦) are a conservative estimate of the ability of students who perform very well on a test form. Retesting is recommended for pretests. Diamond scores are <i>reportable</i> unless your state or local program does not allow it. 	34	238♦	Conservative Estimate Range
	35	238♦	
	36	238♦	
	37	238♦	
	38	238♦	
	39	238♦	
	40	238♦	

Test Score Ranges

Every test form has a unique raw-to-scale score conversion.

Raw score = the number of correct answers on the test.

Scale score = the converted score from the raw score that allows for comparison between students and tests.

You will use the scale score (not the raw score) when reporting results.

CASAS eTests automatically scores each test and calculates the raw and scale score.

Content Standard Blueprints

STEPS Reading is aligned to the English Language Proficiency Standards. The content areas of focus include:

- High-frequency Vocabulary (Pictures)
- High-frequency Vocabulary (Text)
- Numbers
- Vocabulary
- Details
- Main Idea
- Inference
- Point of View and Supporting Evidence

CASAS Reading STEPS Test Content Standard Blueprint - LEVEL A

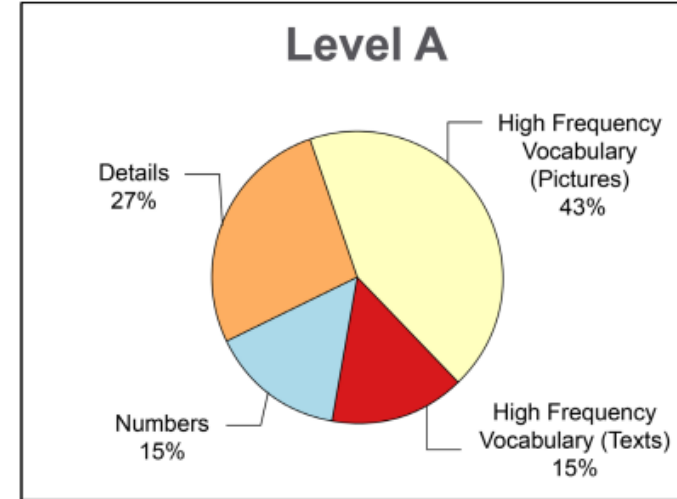


DOWNLOAD AT

<https://www.casas.org/product-overviews/assessments/reading-steps>



Reading STEPS Content Standard Blueprint



NRS Educational Functioning Levels
Levels 1 and 2

English Language Proficiency Standards
Level 1

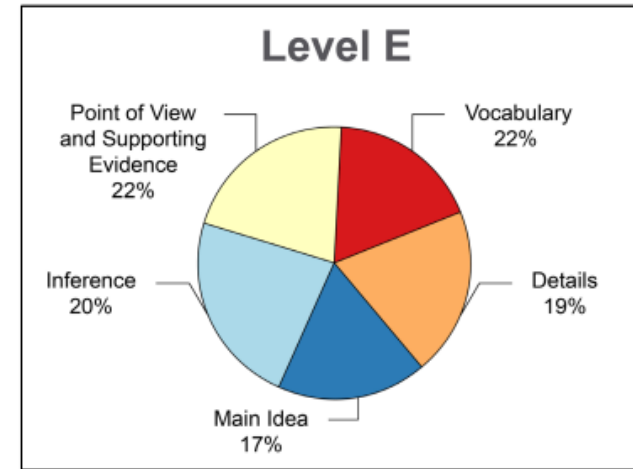
Content Areas	ELP Standard	% of test items
High-frequency Vocabulary (Pictures) Photos Symbols	8	43%
High-frequency Vocabulary (Texts) Words on forms Abbreviations	8	15%
Numbers Time Number words Money and prices Number formatting	8	15%
Details Retell key details	1	27%

CASAS Reading STEPS Test Content Standard Blueprint - LEVEL E



DOWNLOAD AT

<https://www.casas.org/product-overviews/assessments/reading-steps>



NRS Educational Functioning Levels
Levels 5 and 6

English Language Proficiency Standards
Levels 4 and 5

Content Areas	ELP Standard	% of test items
Vocabulary Understand academic vocabulary Understand words with multiple meanings	8	22%
Details Retell key details Locate/Compare details	1	19%
Main Idea Identify the main topic Identify an author's purpose	1	17%
Inference Infer/Draw conclusions	1	20%
Point of View and Supporting Evidence Identify an author's point of view Identify supporting evidence	6	22%

Content Standard Blueprints

STEPS Listening is aligned to the English Language Proficiency Standards. The content areas of focus include:

- Dialogue
- Vocabulary
- Details
- Main Idea
- Summary

CASAS Listening STEPS Test Content Standard Blueprint - LEVEL A

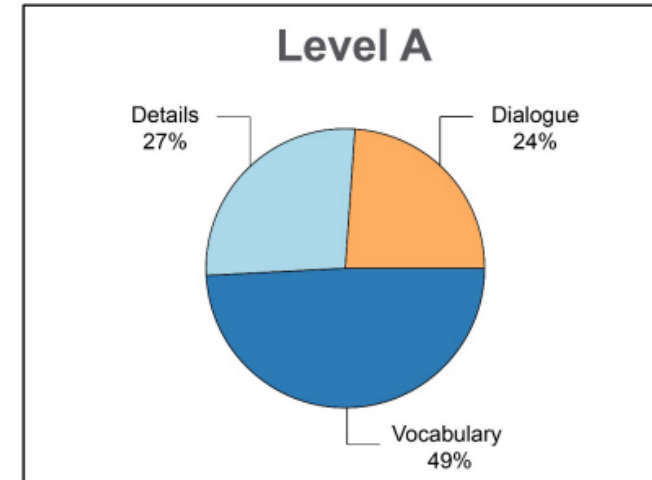


DOWNLOAD AT

<https://www.casas.org/product-overviews/assessments/reading-steps>



Listening STEPS Content Standard Blueprint



NRS Educational Functioning Levels
Levels 1 and 2

English Language Proficiency Standards
Level 1

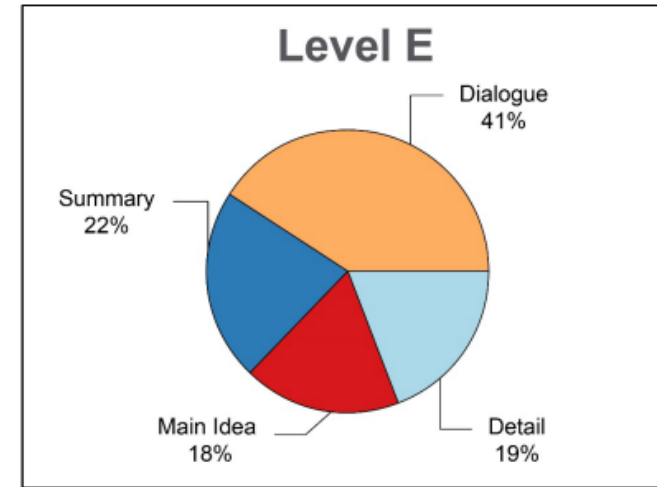
Content Areas	ELP Standard	% of test items
Dialogue Continue the conversation	2	24%
Vocabulary Understand high-frequency words	1	49%
Details Retell key details	1	27%

CASAS Listening STEPS Test Content Standard Blueprint - LEVEL E



DOWNLOAD AT

<https://www.casas.org/product-overviews/assessments/reading-steps>



NRS Educational Functioning Levels
Levels 5 and 6

English Language Proficiency Standards
Levels 4 and 5

Content Areas	ELP Standard	% of test items
Dialogue Continue the conversation	2	41%
Details Retell key details	1	19%
Main Idea Identify the main topic	1	18%
Summary Summarize	1	22%

Content Standard Blueprints

Math GOALS 2 is aligned to the College and Career Readiness Standards for Adult Education. The content areas of focus include:

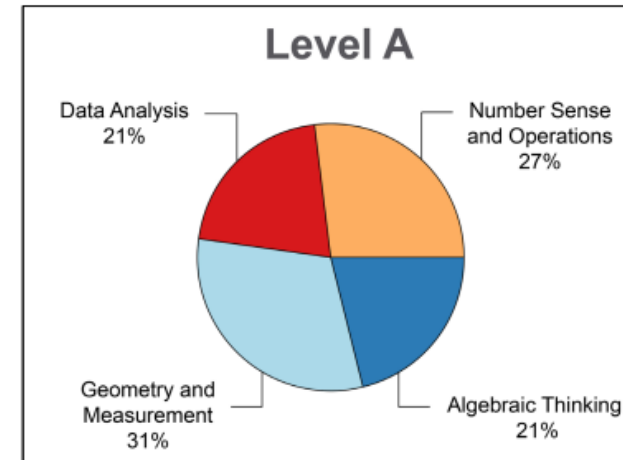
- Number Sense and Operations
- Algebraic Thinking
- Geometry and Measurement
- Data Analysis, Statistics, and Probability

CASAS GOALS Math 2 Content Standard Blueprint - LEVEL A



DOWNLOAD AT

<https://www.casas.org/product-overviews/assessments/math-goals-2>



NRS Educational Functioning Levels
Levels 1 and 2

College and Career Readiness Standards (CCRS)
Levels A and B

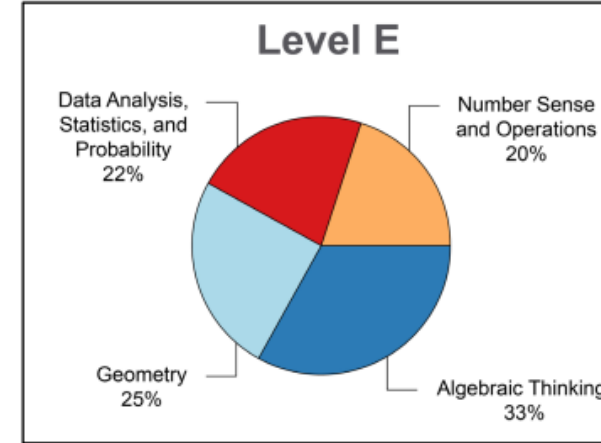
Content Area	CCRS	% of test items
Number Sense and Operations Understand place value Compute using the four operations	NBT	27%
Algebraic Thinking Apply properties of the four operations Determine unknown numbers	OA	21%
Geometry and Measurement Compare shapes Solve perimeter and area problems Measure with non-standard and metric units Solve problems using time and liquid volumes	G MD	31%
Data Analysis Interpret simple data sets, bar graphs and line graphs Solve one- and two-step problems using bar graphs	MD	21%

CASAS GOALS Math 2 Content Standard Blueprint - LEVEL E



DOWNLOAD AT

<https://www.casas.org/product-overviews/assessments/math-goals-2>



NRS Educational Functioning Levels
Levels 5 and 6

College and Career Readiness Standards (CCRS)
Levels D and E

Content Area	CCRS	% of test items
Number Sense and Operations Solve multi-step problems using rates and proportional relationships Understand radicals and irrational numbers	NS RN	20%
Algebraic Thinking Solve problems involving inequalities, pairs of simultaneous linear equations, and quadratic expressions Understand and use function notation Rearrange formulas to highlight a quantity of interest	EE F A.APR A.REI A.CED F.LE F.IF	33%
Geometry Solve real-world problems involving volume and surface area Apply the Pythagorean theorem in real-world contexts and on the coordinate plane Solve problems involving similarity and congruence Understand the concept of density based on area and volume	G G.CO G.SRT G.GMD G.MG	25%
Data Analysis, Statistics, and Probability Understand and apply the concept of probability Use 2-way tables to interpret bivariate data Interpret and compare data sets, including comparisons of statistical variability	SP S.ID	22%

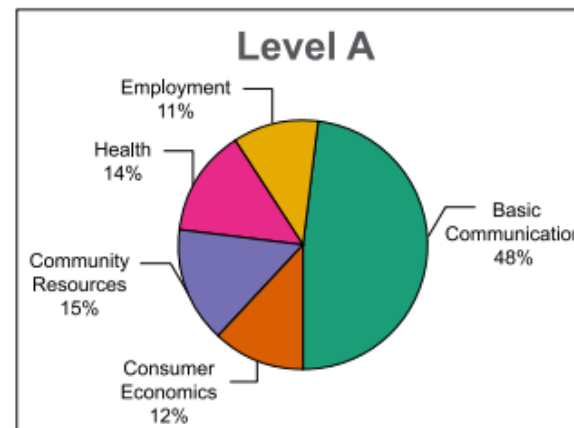
Competency Blueprints

The **CASAS Competencies** identify more than 360 essential life skills that adults need to be functionally competent members of the community, their family, and the workforce. These competencies provide instructional objectives for curriculum.

CASAS Reading STEPS Test Competency Blueprint - LEVEL A

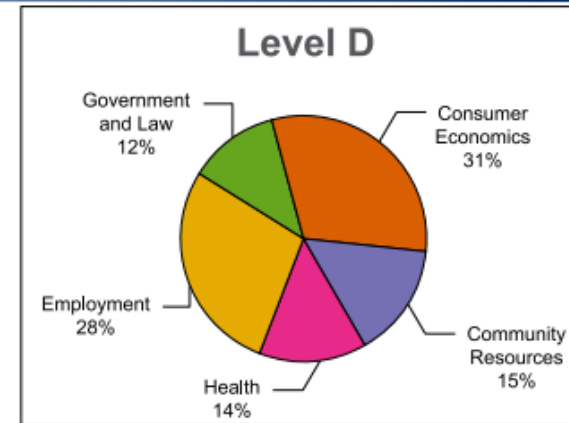


[Reading STEPS Competency Blueprints](#)
[Listening STEPS Competency Blueprints](#)
[Math GOALS 2 Competency Blueprints](#)
[Reading GOALS Competency Blueprints](#)



Competency Areas	% of test items
0. Basic Communication 0.1 Communicate in interpersonal interactions 0.2 Communicate regarding personal information	48%
1. Consumer Economics 1.1 Use measurement and money 1.2 Use information to identify and purchase goods and services 1.5 Understand how to manage household finances	12%
2. Community Resources 2.2 Understand how to locate and use different types of transportation and interpret travel-related information 2.3 Understand concepts of time and weather 2.5 Use community agencies and services	15%
3. Health 3.1 Understand how to access and use the health care system 3.2 Understand forms related to health care 3.5 Understand basic principles of health maintenance	14%
4. Employment 4.1 Understand basic principles of getting a job 4.2 Understand wages, benefits, employee rights, and concepts of employee organizations 4.4 Understand concepts and materials related to job performance and training 4.6 Communicate effectively in the workplace	11%

CASAS Reading STEPS Test Competency Blueprint - LEVEL E



Competency Areas	% of test items
1. Consumer Economics 1.2 Use information to identify and purchase goods and services 1.4 Understand methods and procedures to obtain housing and related services 1.5 Understand how to manage household finances 1.6 Understand consumer protection measures 1.7 Understand procedures for the care, maintenance, and use of personal possessions	31%
2. Community Resources 2.2 Understand how to locate and use different types of transportation and interpret travel-related information 2.5 Use community agencies and services 2.7 Understand aspects of society and culture 2.8 Understand how to access and use educational systems and services	15%
3. Health 3.1 Understand how to access and use the health care system 3.4 Understand basic safety measures and health risks 3.5 Understand basic principles of health maintenance 3.6 Understand basic health and medical information	14%
4. Employment 4.1 Understand basic principles of getting a job 4.3 Understand work-related safety standards and procedures 4.4 Understand concepts and materials related to job performance and training 4.6 Communicate effectively in the workplace	28%
5. Government and Law 5.4 Understand information about taxes and fees 5.6 Understand civic responsibilities and activities	12%



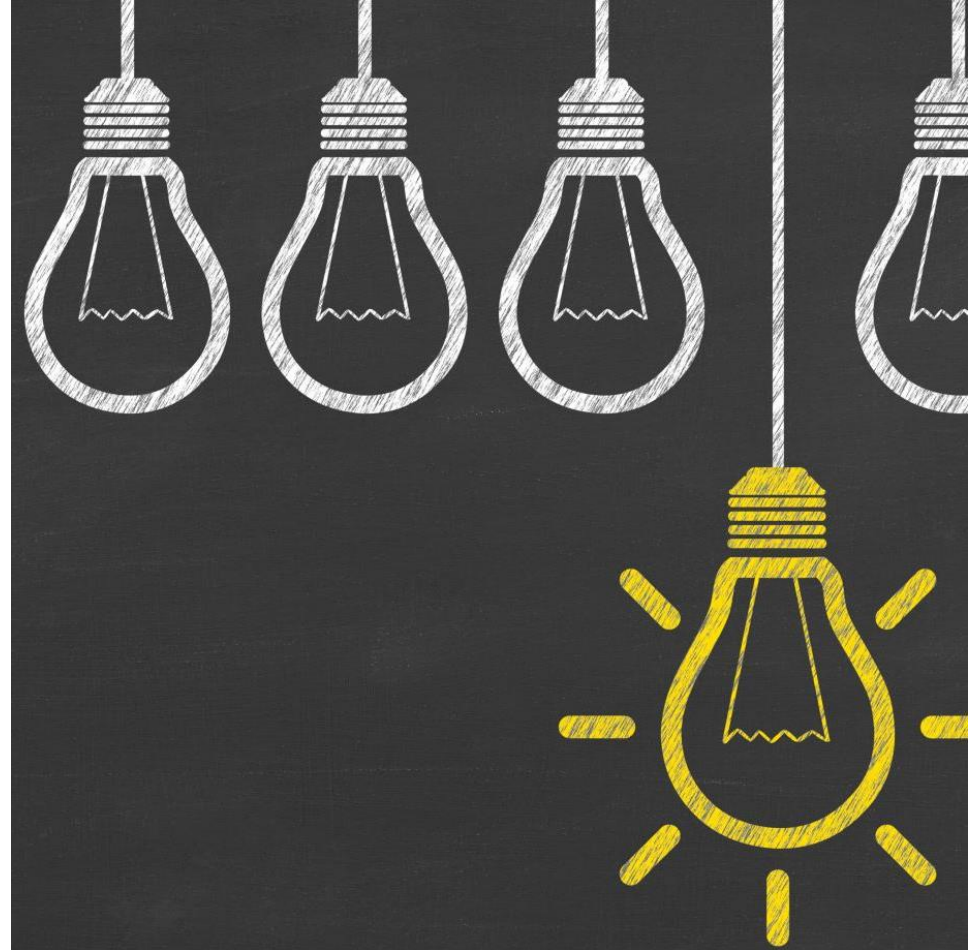
TOPSpro Reports

If you have been using eTesting, then you have access to TOPSpro.

TOPSpro Enterprise Sample Reports

Go to <https://www.casas.org/product-overviews/software/topspro-enterprise/sample-reports#SkillsProfile> to learn more about the available reports you can generate.

- Content Standard Performance
- Competency Performance
- Individual Skills Profile
- Score Reports
- NRS Federal Reports



CASAS Reading STEPS

Student Content Standard Performance - LEVEL D

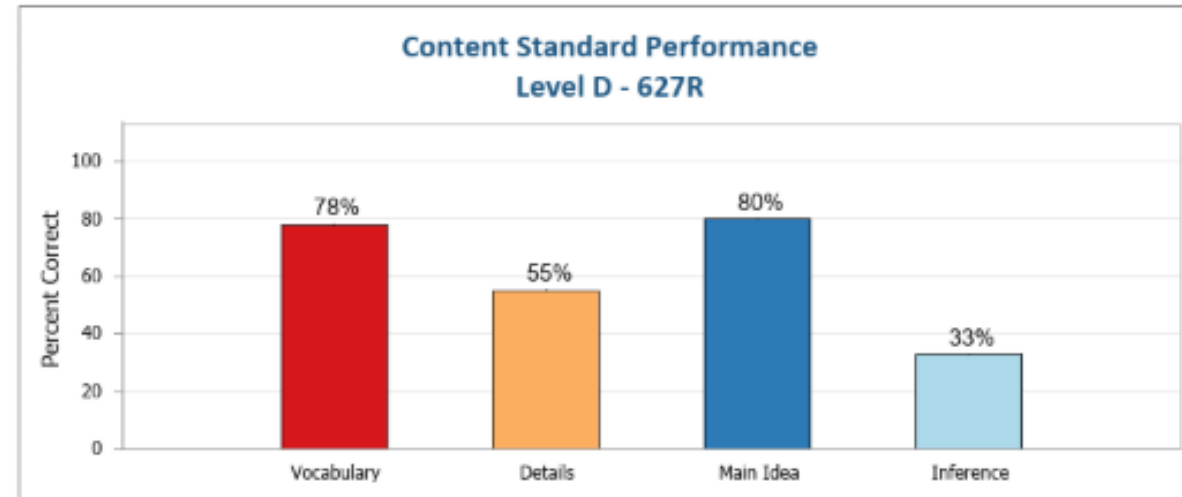
Shows student's performance on a given test form
(Also available by class)



Student Content Area

Page 1 of 1
SCNA

Agency:	4908 - Rolling Hills Adult School (RHAS)	Level Scale:	CASAS STEPS Reading
Site:	1 - 1	Form Level:	D
Class:	N/A	Student:	Last name, First Name 12120811
Teacher:	N/A	Raw Score:	23
Form:	627R - Reading STEPS Level D	Scale Score:	220



English Language Proficiency Standards Reading Content Areas	ELP Standard	N	% Correct
Vocabulary Understand academic vocabulary Understand words with multiple meanings	8	9	78 %
Details Retell key details Locate/Compare details	1	11	55 %
Main Idea Identify the main topic Identify an author's purpose Identify an author's point of view	1, 6	10	80 %
Inference Infer/Draw conclusions	1	6	33 %

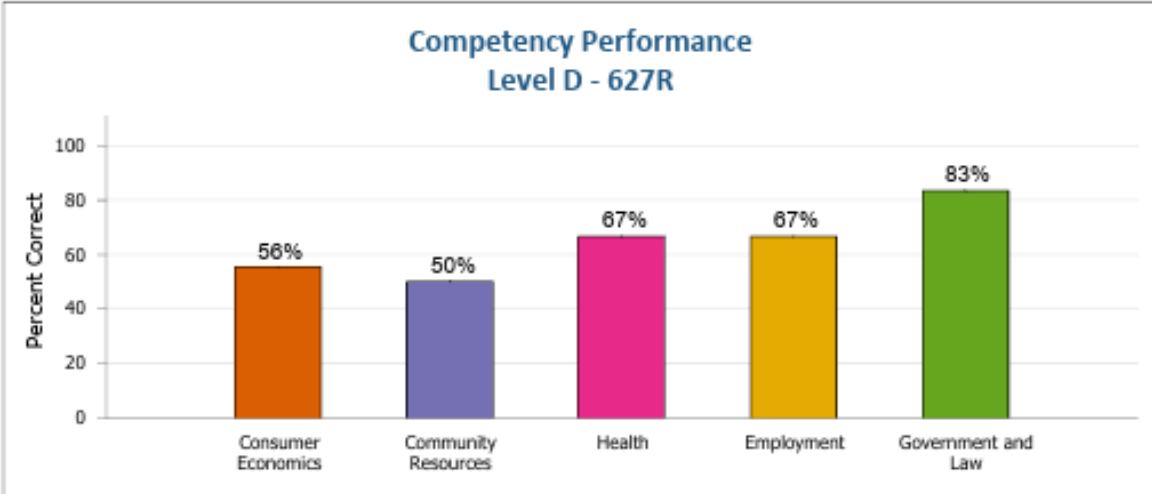
CASAS Reading STEPS Student Competency Performance - LEVEL D

Shows how a student responded with respect to the competencies measured on the test form. (Also available by class)



Student Competency Area

Agency:	4908 - Rolling Hills Adult School (RHAS)	Level Scale:	CASAS STEPS Reading
Site:	1 - 1	Form Level:	D
Class:	N/A	Student:	Last name, First Name 12120811
Teacher:	N/A	Raw Score:	23
Form:	627R - Reading STEPS Level D	Scale Score:	220



Competency Areas	N	% Correct
1. Consumer Economics 1.2 Apply principles of comparison shopping for goods & services 1.5 Apply principles of budgeting and management of money	9	56%
2. Community Resources 2.2 Understand how to locate and use transportation 2.8 Interpret information about the educational system, from early childhood to post-secondary	6	50%
3. Health 3.5 Understand basic principles of health maintenance	3	67%
4. Employment 4.3 Understand work-related safety standards and procedures 4.4 Understand concepts and materials related to job performance 4.6 Communicate effectively in the workplace	12	67%
5. Government and Law 5.6 Understand civic responsibilities and activities	6	83%

Ann Lara

ID# 12335610

Agency: 4908 - Rolling Hills Adult School (RHAS)

Program: ESL/ELL

Most Recent	Form	Date	Scale Score	NRS Level	Form Level	Number of items		
						Total	Correct	Attempted
Listening	623L	10/02/2023	201	3	B	36	31	34
Reading	627R	10/02/2023	215	4	D	36	18	35

Reading Competencies		N	Correct
Consumer Economics		9	33 %
Community Resources		6	16 %
Health		3	33 %
Employment		12	83 %
Government and Law		6	50 %

Listening Competencies		N	Correct
Basic Communication		10	90 %
Consumer Economics		4	100 %
Community Resources		6	83 %
Health		6	83 %
Employment		10	80 %

Reading Task Areas		N	Correct
Forms		7	57 %
Charts, tables, and graphs		4	75 %
Texts, emails, articles, and narratives		16	56 %
Signs, ads, and labels		9	22 %

NRS Educational Functioning Levels		CASAS Score Ranges	
EFL	ESL	STEPS Reading	STEPS Listening
1	ESL Level 1	183 & below	181 & below
2	ESL Level 2	184-196	182-191
3	ESL Level 3	197-206	192-201
4	ESL Level 4	207-216	202-211
5	ESL Level 5	217-227	212-221
6	ESL Level 6	228 & above	222 & above

English Language Proficiency Standards		ELP Standard	N	Correct
Reading Content Areas				
Vocabulary		8	9	44 %
Understand academic vocabulary				
Understand words with multiple meanings				
Details		1	11	55 %
Retell key details				
Locate/Compare details				
Main Idea		1, 6	10	60 %
Identify the main topic				
Identify an author's purpose				
Identify an author's point of view				
Inference		1	6	33 %
Infer/Draw conclusions				

English Language Proficiency Standards		ELP Standard	N	Correct
Listening Content Areas				
Dialogue		2	14	93 %
Continue the conversation				
Details		1	16	88 %
Retell key details				
Main Idea		1	6	67 %
Identify the main topic				

Individual Skills Profile

The **Individual Skills Profile (ISP)** shows student performance in several areas. It lists the tests taken, form numbers, scale scores, NRS levels, and grade level equivalents (optional).

The report displays the CASAS Competency areas on the left side. On the right side, the report shows content standards results. The report also indicates student performance in the CASAS Task Areas.

A **High School Equivalency (HSE) Predictor** would display automatically if the student achieved an appropriate score to indicate the likelihood of passing an HSE test.

Available in both TE Basic and Enhanced Packages.

CASAS Reading GOALS Personal Score Report from TOPSpro- LEVEL D

Gives a summary of student's results and describes student's current skill level based on their scale score.



01/05/2020
03:16:15

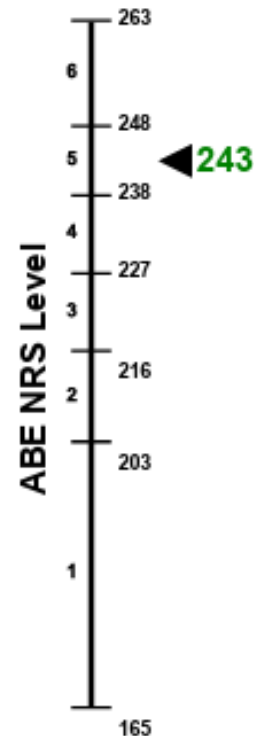
Personal Score Report

Page 1 of 2
PSR3

Student Sample - 5615969

Agency:	4908 - Rolling Hills Adult School (RHAS)	Class:	020101 - AM: HSD/HSE
Site:	01 - RHAS: North Campus	Teacher:	Teacher20@rhas.org

Modality	Test Form	Test Level	Test Date	Scale Score	NRS Level
Reading	907R	D	12/10/2019	243	ABE Level 5



ABE Level 5

Has a range of vocabulary adequate for reading material related to life and work needs, such as common workplace communications. Interprets forms, instructions and manuals with moderately complex formatting. Reads diagrams with familiar content. Understands some technical vocabulary related to work needs. Is able to apply reading skills to computer and Internet use, including searching for and identifying documents and information and understanding standard Web site organization.

Reading and Listening Skill Level Descriptors for ESL

Describes student's current skill level based on their scale score.



Reading and Listening Skill Level Descriptors for ESL – STEPS

ESL Level*	Descriptors
6	<p>Advanced ESL</p> <p>Reading: Can understand complex texts such as operating instructions, work reports, and manuals containing workplace and technical vocabulary. Can analyse and evaluate the reasoning in persuasive texts, determine central ideas or themes and identify supporting ideas. Can determine the meaning of general academic and content-specific words and phrases as well as idiomatic language in some academic and professional texts.</p> <p>Listening: Can participate in conversations and extended discussions about a range of substantive topics, texts, and issues. Can understand extended speech on a range of topics such as detailed presentations, meetings, and media broadcasts to summarize claims and evidence.</p>
5	<p>High Intermediate ESL</p> <p>Reading: Can understand the overall structure of most written materials in everyday and workplace communications and diagrams. Can apply reading skills to searching for documents and information online efficiently. Has proficiency with some technical vocabulary related to work needs and a growing number of idiomatic expressions which aid in understanding website organization and business correspondence.</p> <p>Listening: Can participate in routine conversations, discussions, and exchanges of information about a range of work and life topics and issues delivered at a normal rate. Can understand instructions in a variety of contexts.</p>
4	<p>Low Intermediate ESL</p> <p>Reading: Can understand text in formats such as tables, checklists, and more detailed forms in the workplace. With help, can cite specific details from and summarize texts such as routine emails and webpage content. Using context, can determine the meaning of general words and phrases and frequently occurring expressions in written texts about familiar every day and work contexts, such as in simple written instructions and basic terms in common computer applications.</p> <p>Listening: Can integrate the ideas of multiple speakers in routine conversations and answer relevant questions about familiar topics. Can follow basic rules for discussion and ask questions to gain information and clarify understanding.</p>
3	<p>High Beginning ESL</p> <p>Reading: Can understand simple material on familiar topics such as workplace notices, advertisements, and common forms. With support, can identify the main topic and locate information in short familiar texts and ordered lists. Can determine the meaning of frequently occurring words, phrases, and expressions in written texts about familiar topics such as basic directions, schedules, signs, maps, and menus.</p> <p>Listening: Can take turns in interactions with others and respond to simple wh- questions with noticeable ease. Can participate in and understand the main idea of conversations about familiar topics and contexts.</p>
2	<p>Low Beginning ESL</p> <p>Reading: Can understand transportation, health, and workplace signs with multiple words or symbols and can comprehend short texts such as simple work forms. Can understand frequently occurring words, simple phrases, and formulaic expressions beyond basic needs such as in labels and work schedules.</p> <p>Listening: Can understand common yes/no questions and wh- questions on familiar topics. Can actively listen to and participate in short conversations about familiar contexts and topics such as simple greetings and introductions, and workplace instructions.</p>
1	<p>Beginning ESL Literacy</p> <p>Reading: Can understand very common words and symbols to meet basic personal and survival needs. Can understand important information on flyers and signs, such as time, days of the week, months, years, and numbers 1-100. Can recognize the meaning of some frequently occurring words and phrases on simple public signs and very basic forms.</p> <p>Listening: Can understand simple yes/no questions and some wh- questions. With limited involvement, can participate in short conversations involving simple greetings and introductions. Can minimally comprehend isolated words and phrases (e.g., recognizing basic commands).</p>

*National Reporting System's (NRS) Educational Functioning Levels (EFLs) for ESL

When do CASAS eTests expire?



CASAS eTests never expire and are not attached to specific testing modalities which makes CASAS eTests units super flexible. CASAS eTests can be used interchangeably for **Reading, Math, and Listening** assessments all year and beyond.

Now that you've completed Recertification.....

Next Steps

- **ADVISE YOUR DATA MANAGER** to record your CASAS Recertification Training in SiD (under the Staff History → Training Tab)
- If you need a “**Certificate of Attendance**” (CEU) to verify today's attendance, send an email request to Marty at martha.olsen@gmail.com or comment in chat.

Questions?

Email Marty Olsen – martha.olsen@gmail.com

PowerPoint and Links can be found at
<https://www.mnabeassessment.com/presentations>
(select links under CASAS Recertification – April 2025)

For more information:
www.mnabeassessment.com/casas